

1. Table of Contents (This Page)
Created on Wed Oct 16 11:34:56 2013

2. component

3. solder

4. plated-drill

5. componentmask

6. soldermask

7. topsilk

8. bottomsilk

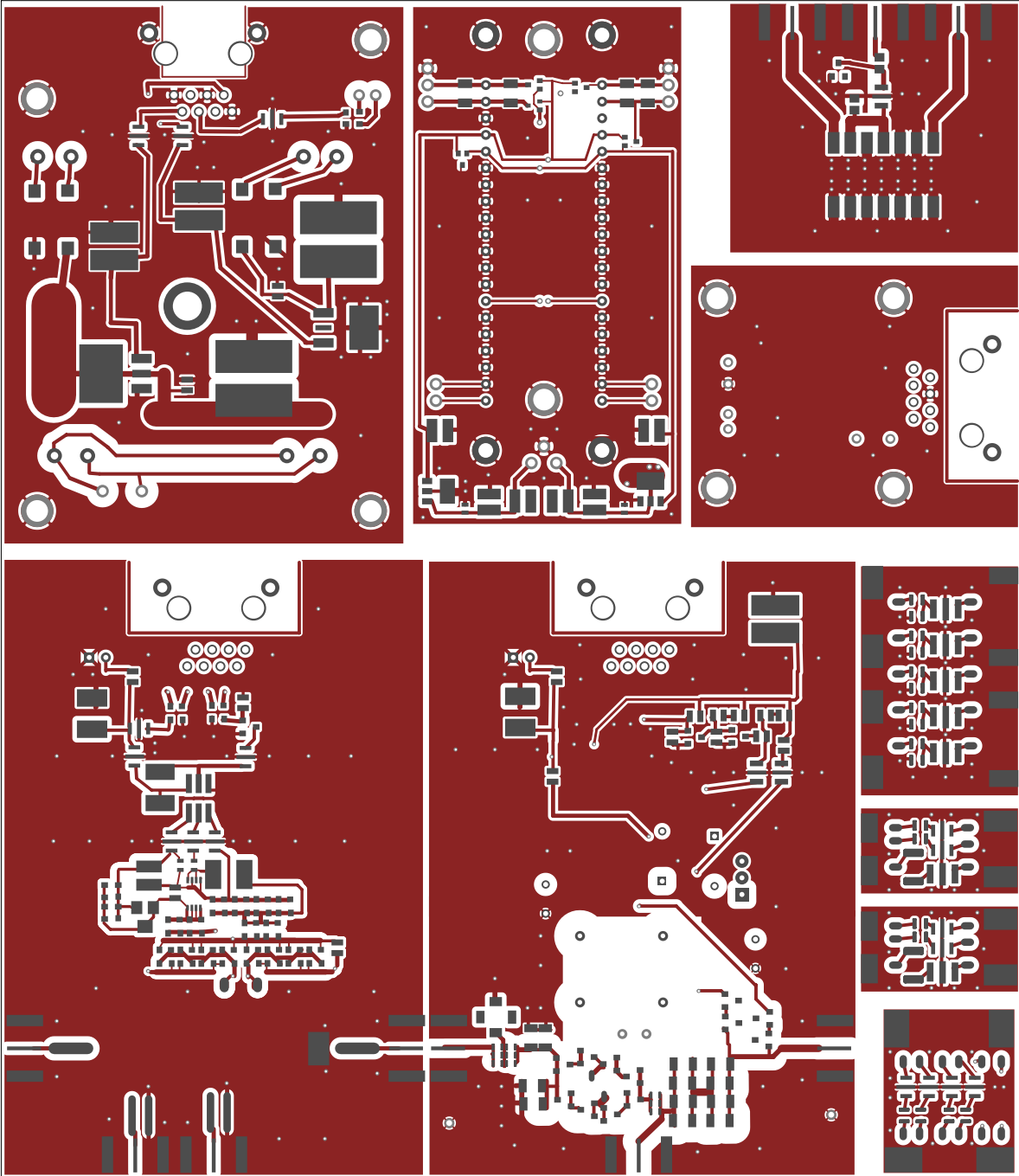
9. toppaste

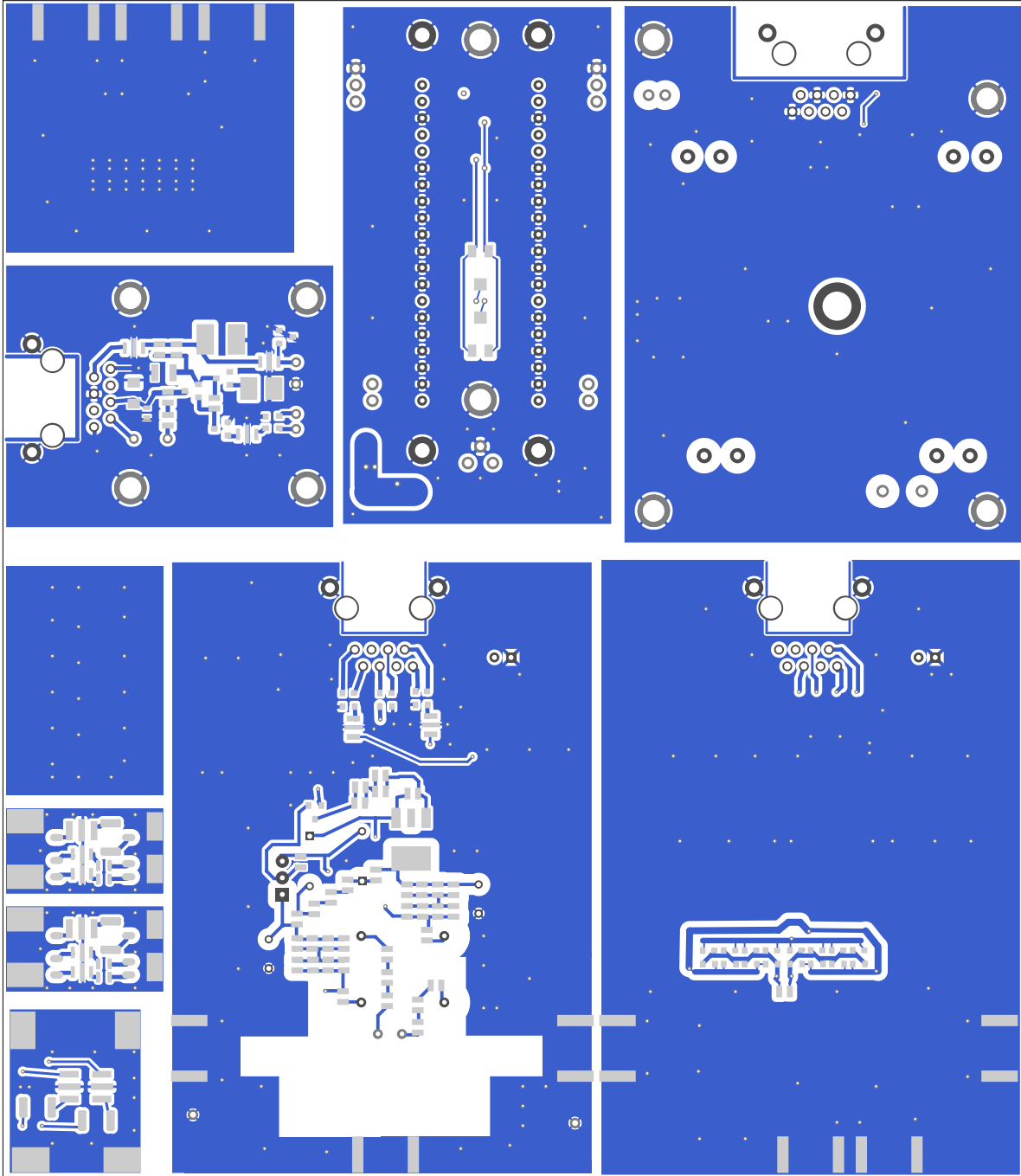
10. bottompaste

11. topassembly

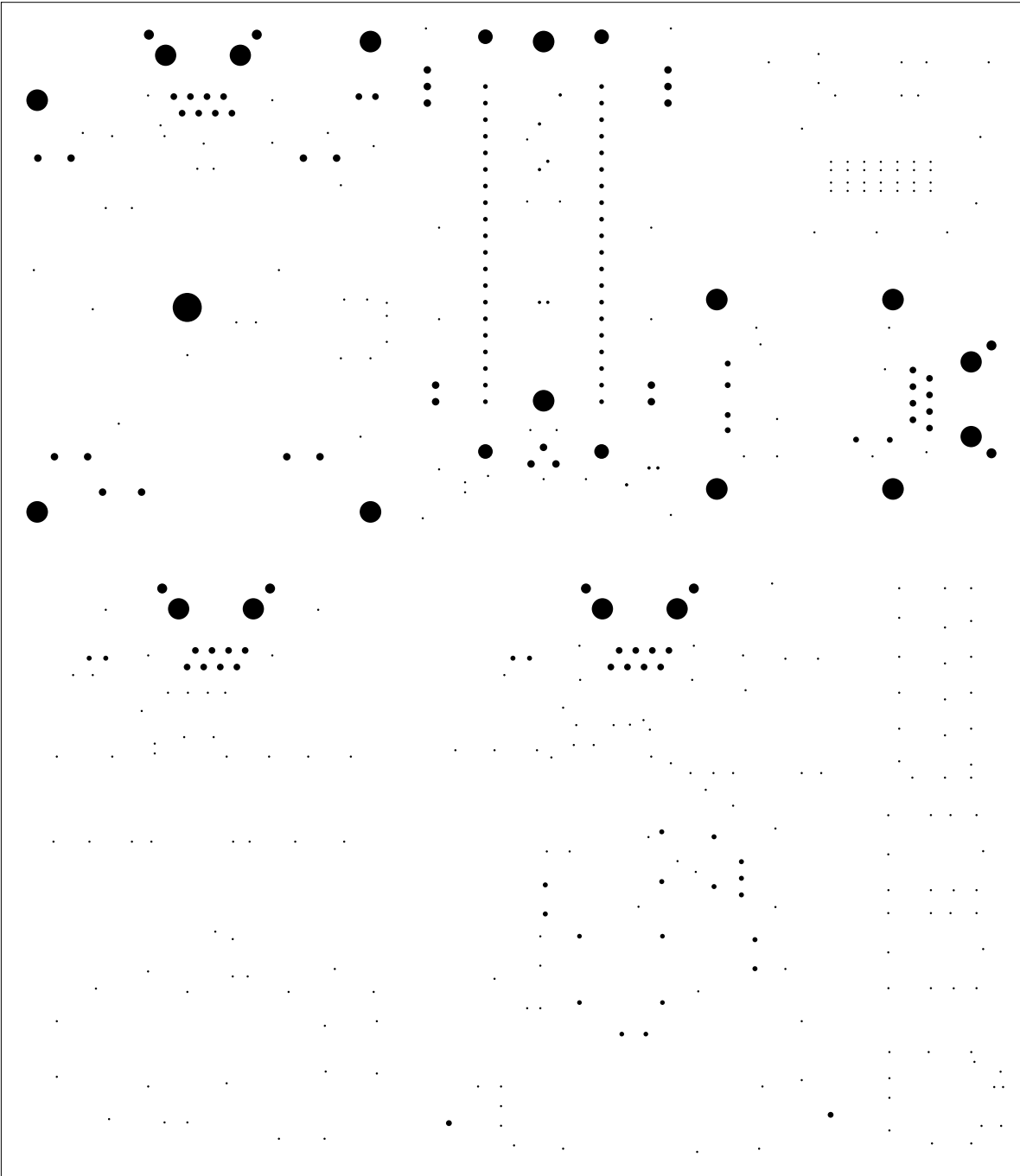
12. bottomassembly

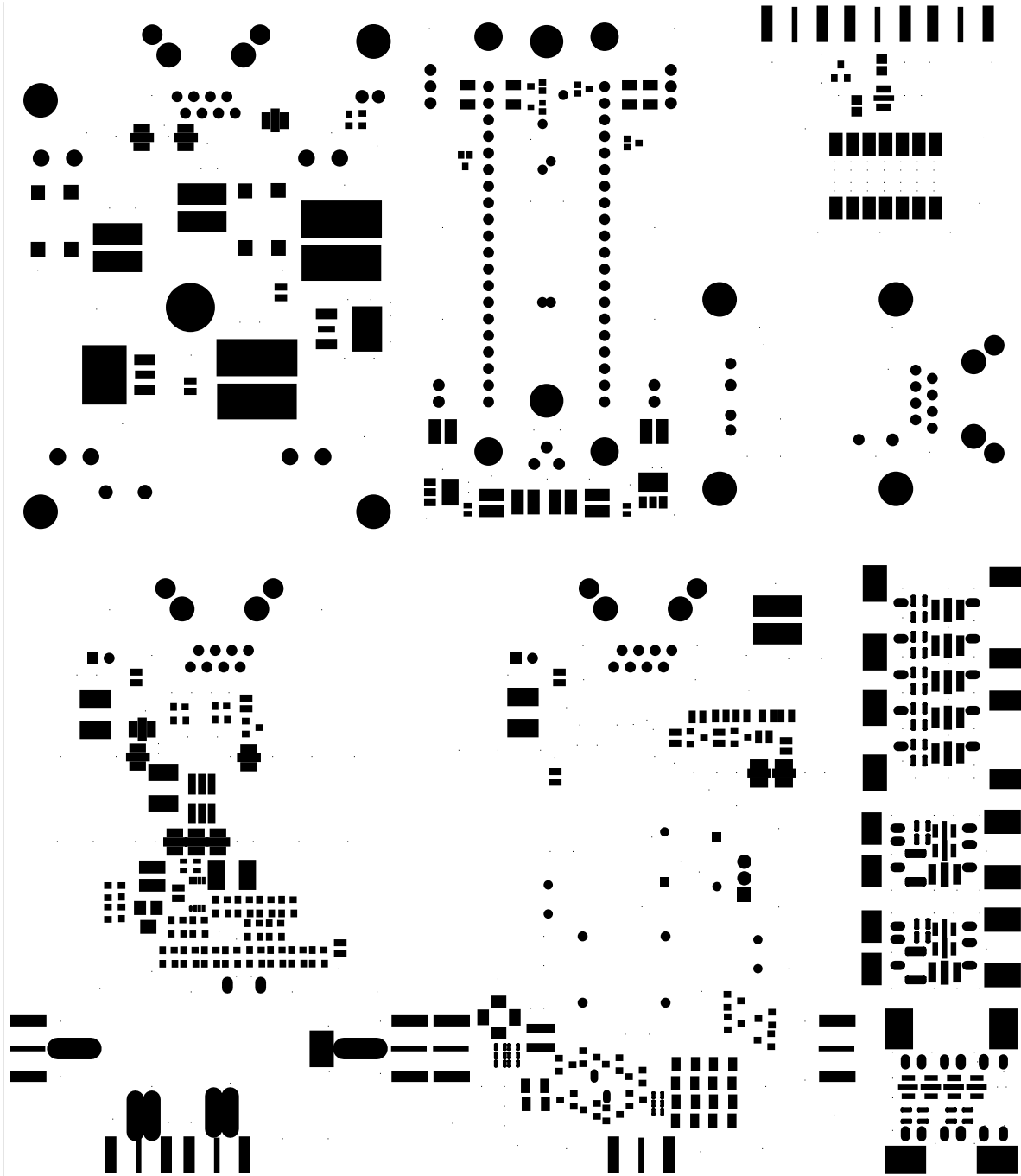
13. fab

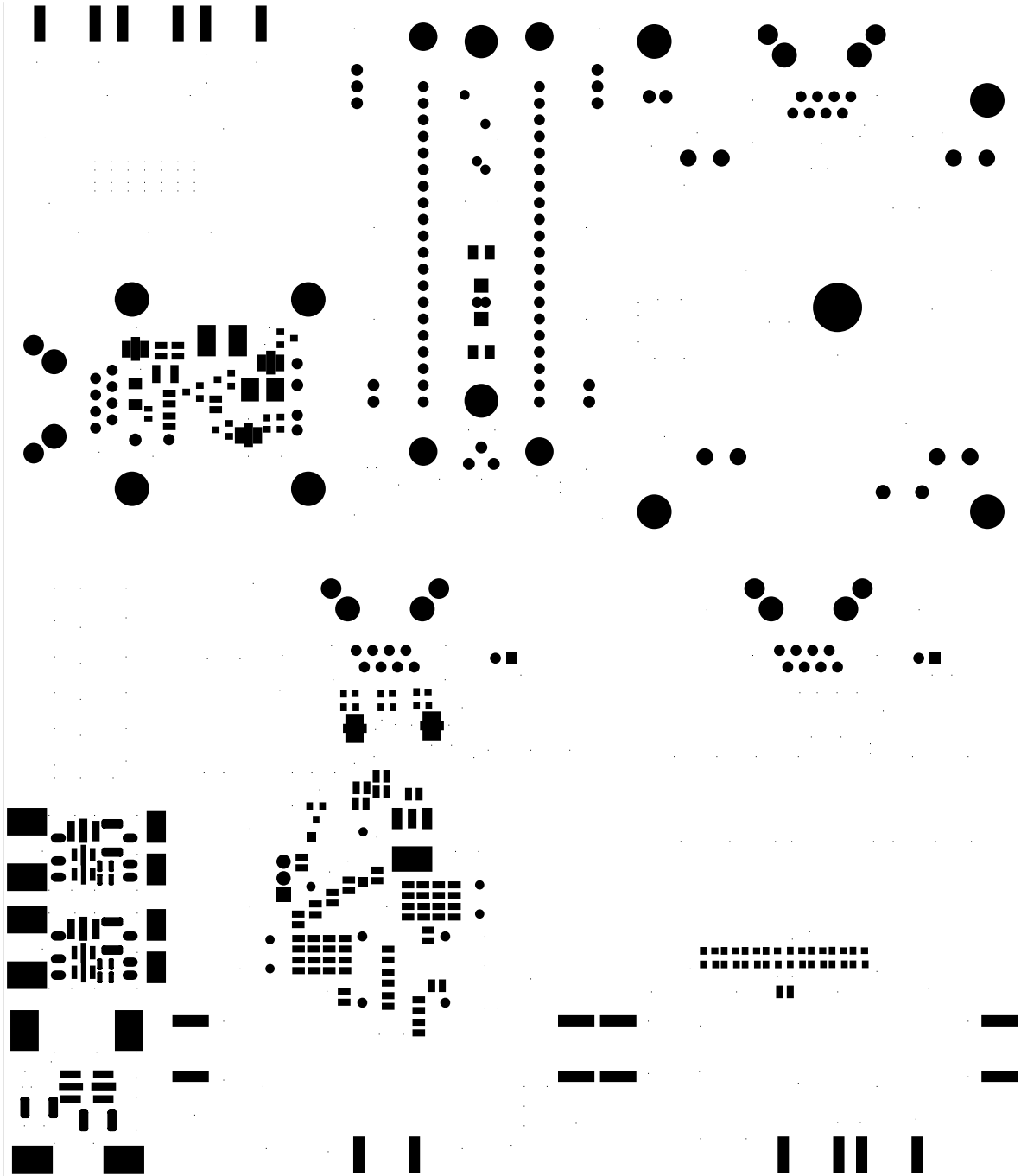




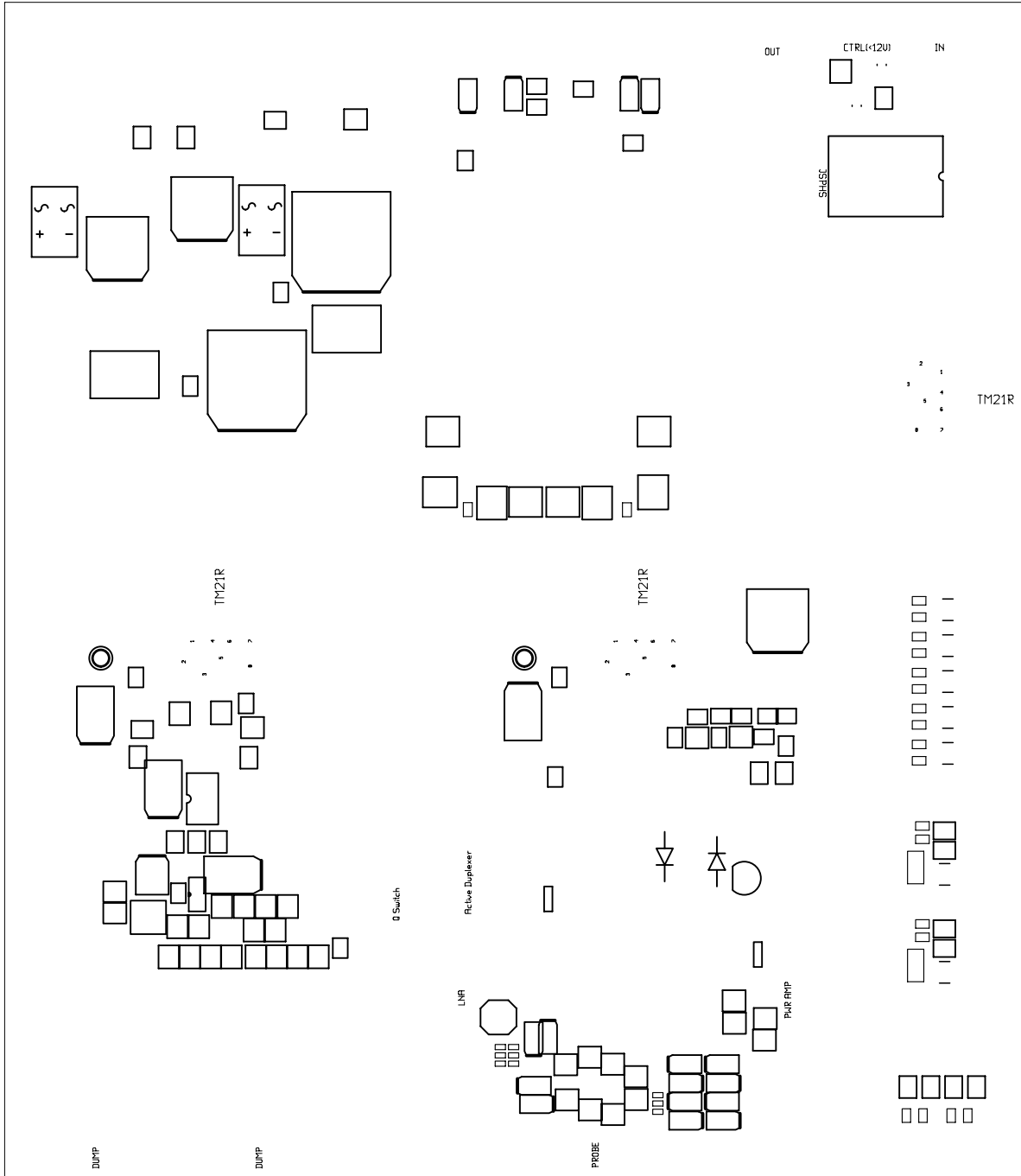
bottom (mirrored), scale = 1:1.000
lfamp-qsw-dup.pcb

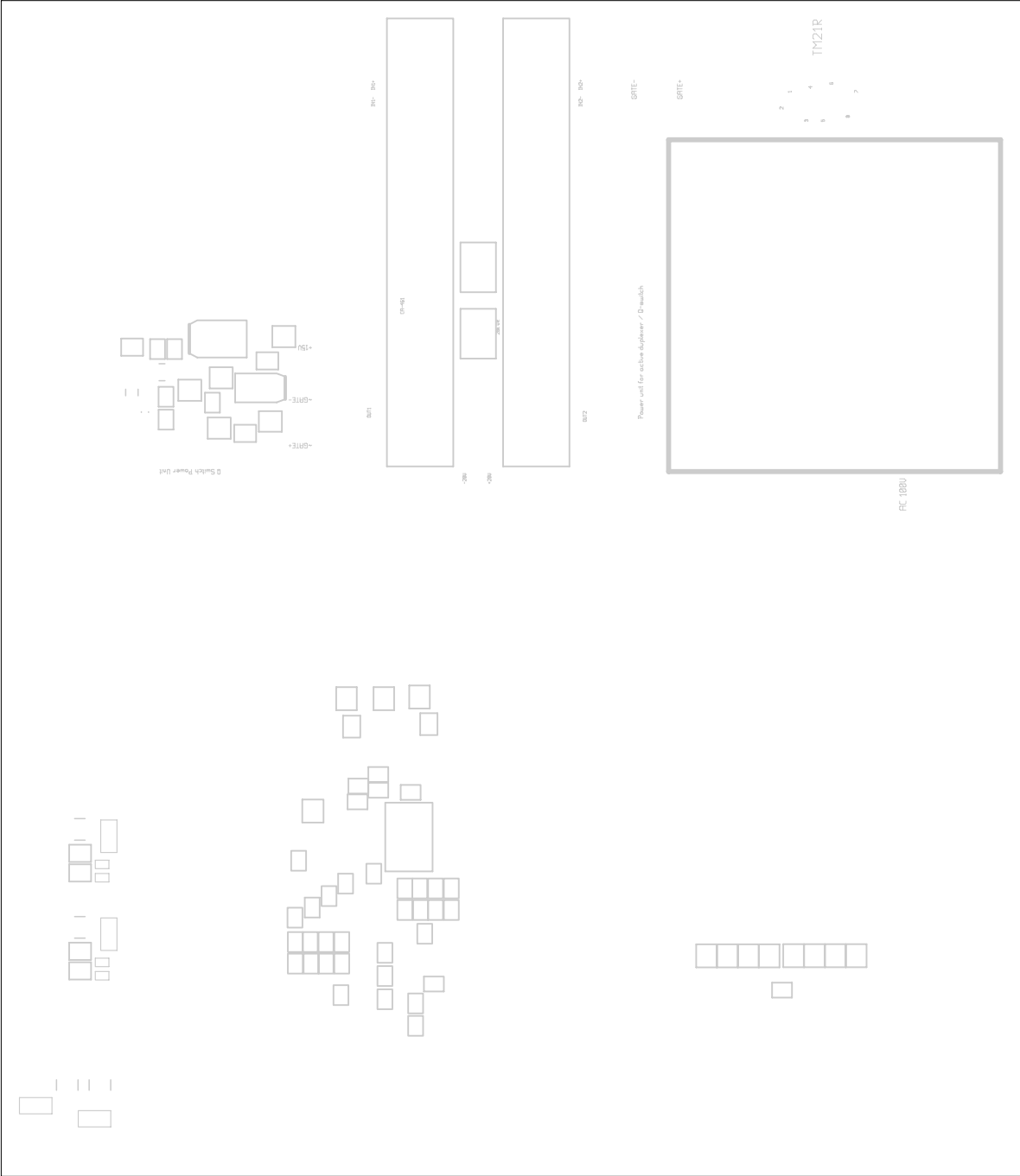




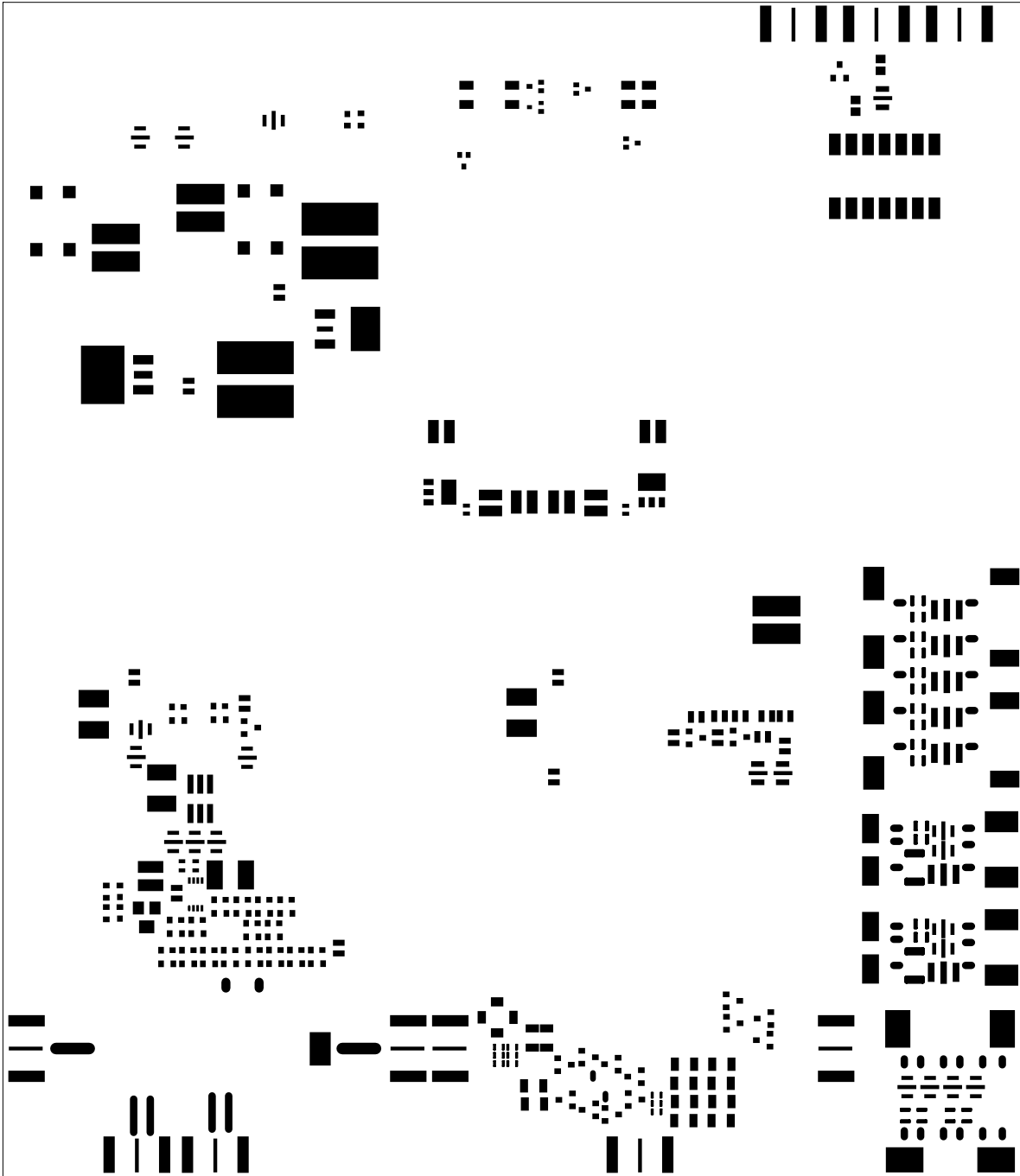


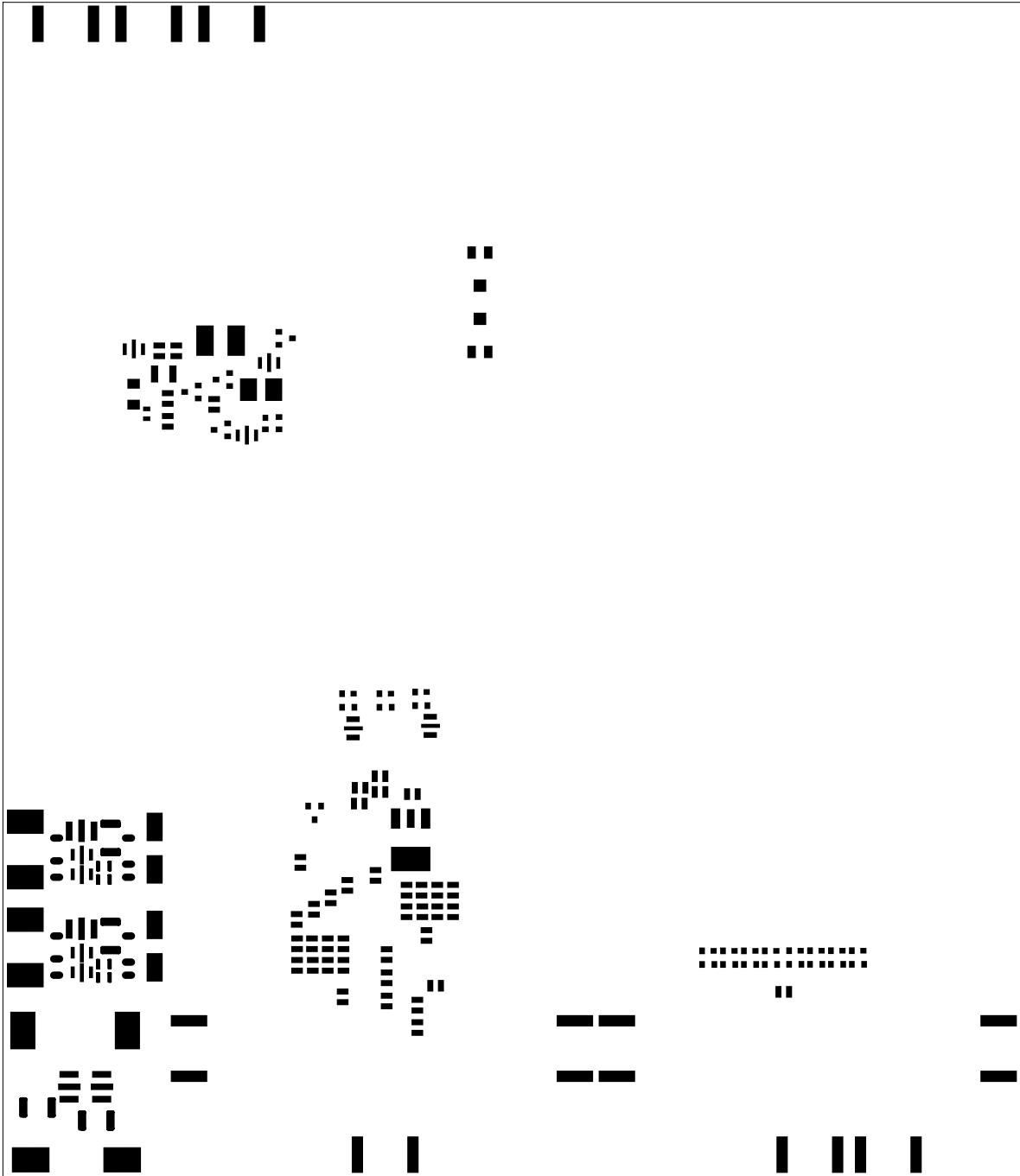
bottommask (mirrored), scale = 1:1.000
lfamp-qsw-dup.pcb

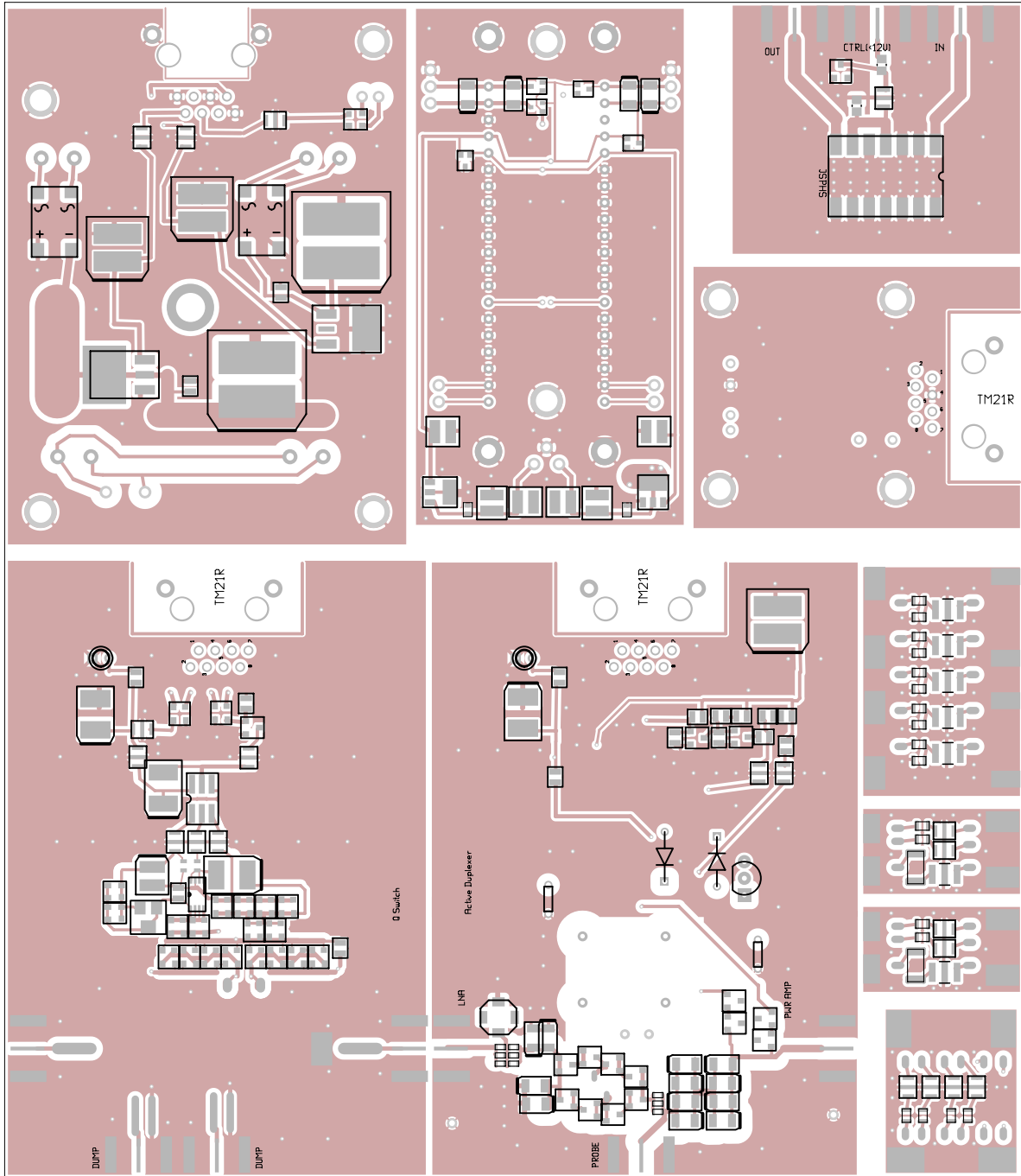


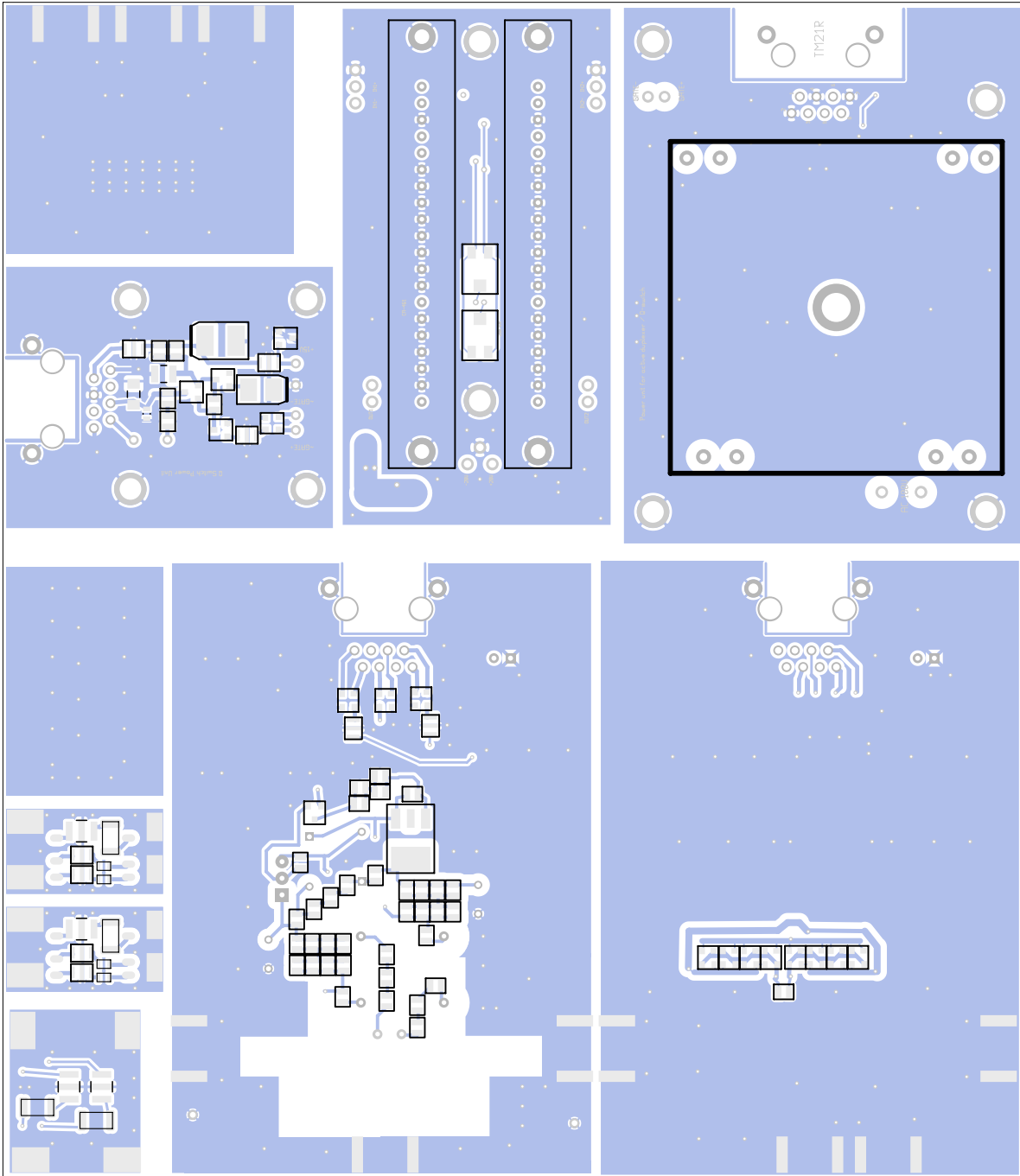


bottomsilk (mirrored), scale = 1:1.000
lfamp-qsw-dup.pcb









bottomassembly (mirrored), scale = 1:1.000
lfamp-qsw-dup.pcb

There are 12 different drill sizes used in this layout, 430 holes total

Symbol	Diam. (Inch)	Count	Plated?
Y	0.013	264	YES
+	0.020	9	YES
x	0.028	46	YES
o	0.030	15	YES
□	0.035	8	YES
ψ	0.040	34	YES
#	0.045	23	YES
⊗	0.060	8	YES
⊙	0.088	4	YES
⊠	0.128	8	YES
⊕	0.130	10	YES
⊖	0.175	1	YES

Title: (unknown) - Fabrication Drawing
 Author: northriv
 Date: 10/16/02-34:57 2013 UTC
 Maximum Dimensions: 7086.610000 mils wide, 6141.730000 mils high

